

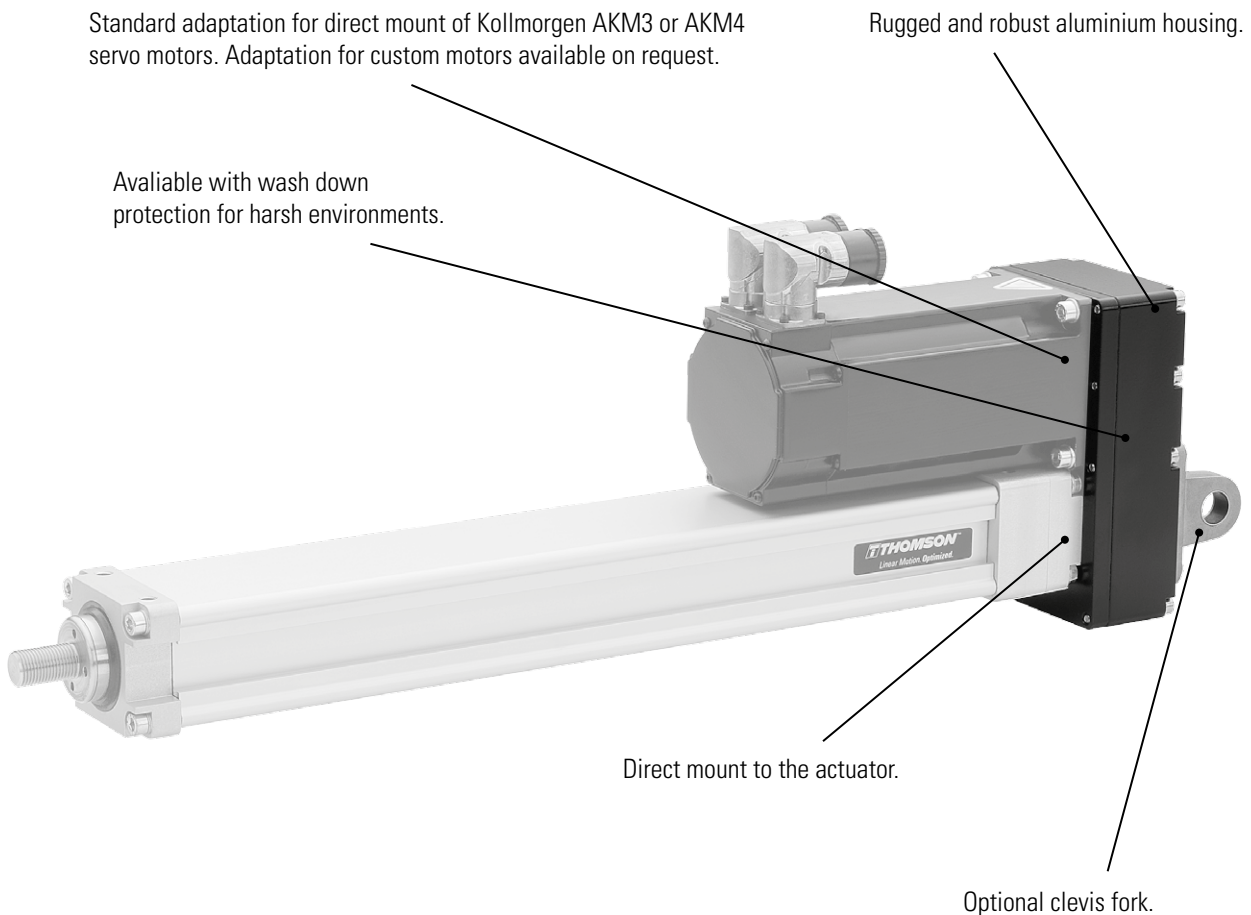
Belt Gear BGM06

Belt gear for Precision Linear Actuator T60

Belt Gear BGM06

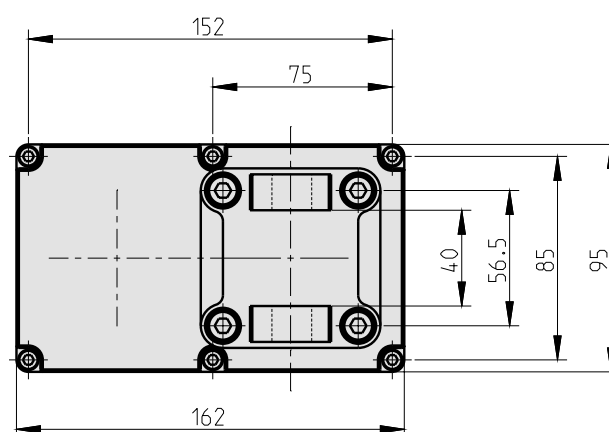
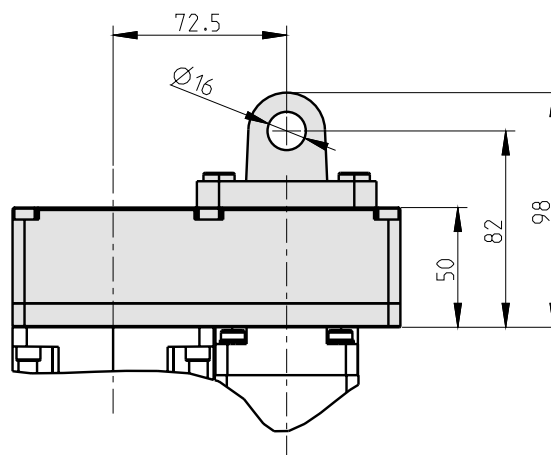
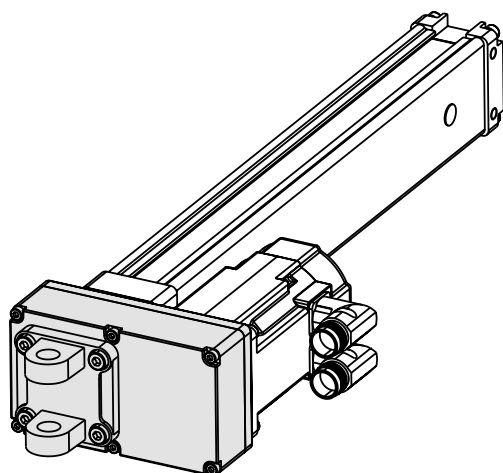
Introduction

The BGM06 belt gear is developed to fit directly on to the T60 series of Precision Linear Actuators. Quick mounting, small overall dimensions and reliable operation are some of the benefits that BGM06 offers. BGM06 also comes with the possibility to add a clevis fork to the rear of the gear. The fork in combination with the optional clevis pins that are mounted directly to the actuator tube makes this type of mounting fast and easy while adding a minimum to the overall package dimensions. If the actuator should operate in harsh environments there is a wash down protection option that will improve the gears ability to withstand water and other aggressive chemicals.



Belt Gear BGM06

Technical data



Drawing show the belt gear equipped with the option clevis mounting fork.

Specifications			
Ratio	[i]	1:1	2:1
Input speed, maximum	[rpm]	4000	4000
Input torque, maximum	[Nm]	2,1	3,4
Efficiency		0,85	0,85
Inertia	[kgm ²]	0,000076	0,000100
Weight	[kg]	1,6	1,7
Material		Aluminium	
Options		Clevis mounting fork Wash down protection	

Ordering Key								
Position	1	2	3	4	5	6	7	8
Your code								
Example	BGM06	-2	-CC	AK3	P	T06	S	XX
1. Belt gear type BGM06 = belt gear size 06			4. Motor type interface AK3 = Kollmorgen AKM3 AK4 = Kollmorgen AKM4			7. Mounting options X = no option, standard S = clevis		
2. Ratio -1 = 1:1 -2 = 2:1			5. Motor mounting position P = parallell to unit			8. Protection option XX = no option, standard S1 = wash down protection		
3. Coupling type -CC = conical couplings			6. Unit type interface T06 = precision linear actuator type T60					

EUROPE

United Kingdom

Thomson
Phone: +44 (0) 1271 334 500
Fax: +44 (0) 1271 334 501
Email: sales.uk@thomsonlinear.com

Germany

Thomson
Nürtinger Straße 70
72649 Wolfschlugen
Phone: +49 (0) 7022 504 0
Fax: +49 (0) 7022 504 405
Email: sales.germany@thomsonlinear.com

France

Thomson
Phone: +33 (0) 243 50 03 30
Fax: +33 (0) 243 50 03 39
Email: sales.france@thomsonlinear.com

Italy

Thomson
Largo Brughetti
20030 Bovisio Masciago
Phone: +39 0362 594260
Fax: +39 0362 594263
Email: info@thomsonlinear.it

Spain

Thomson
Rbla Badal, 29-31 7th, 1st
08014 Barcelona
Phone: +34 (0) 9329 80278
Fax: + 34 (0) 9329 80278
Email: sales.esm@thomsonlinear.com

Sweden

Thomson
Estridsväg 10
29109 Kristianstad
Phone: +46 (0) 44 24 67 00
Fax: +46 (0) 44 24 40 85
Email: sales.scandinavia@thomsonlinear.com

USA, CANADA and MEXICO

Thomson
203A West Rock Road
Radford, VA 24141, USA
Phone: 1-540-633-3549
Fax: 1-540-633-0294
E-mail: thomson@thomsonlinear.com
Literature: literature.thomsonlinear.com

ASIA

Asia Pacific

Thomson
Unit A, 16 Floor, 169 Electric Road
Manulife Tower, North Point, Hong Kong
Phone: +852 2503 6581
Fax: +852 2571 8585
E-mail: sales.hk@thomsonlinear.com

China

Thomson
Rm 2205, Scitech Tower
22 Jianguomen Wai Street
Beijing 100004
Phone: +86 400 6661 802
Fax: +86 10 6515 0263
Email: sales.china@thomsonlinear.com

India

Thomson
Unit No 2, SDF 1 Seepz Andheri
Mumbai 400 096
Phone: +91 22 2829 4058
Fax: +91 22 2839 4036
Email: sales.india@thomsonlinear.com

Japan

Thomson
Minami-Kaneden 2-12-23, Suita
Osaka 564-0044 Japan
Tel: +81-6-6386-8001
Fax: +81-6-6386-5022
E-mail: csinfo_dicgj@danaher.co.jp

Korea

Thomson
#407, Kins Tower, Bundang Intellige 1, 25-1
Jeongja-dong, Bundang-gu, Seongnam-city,
Gyeonggi-do, Korea
Phone: +82 31 784 8972
Fax: +82 31 784 8980
Email: sales.kor@thomsonlinear.com

www.thomsonlinear.com

DW110687-GB-0612-TJ
Specifications are subject to change without notice. It is the responsibility of the product user to determine the suitability of this product for a specific application. All trademarks property of their respective owners. © Thomson Industries, Inc. 2012

 **THOMSON™**

Linear Motion. Optimized.